

SASH & MILLWORK
 667 SPRING STREET
 NORTH DIGHTON, MA. 52764
 PHONE # (508) 880-8808
 FAX # (508) 880-8828
 WWW.BOSTONSASH.COM

B.S. STANDARDS
CASEMENT OPTION 2
 DESCRIPTION:
ELEVATION, SECTIONS & NOTES
NANTUCKET E.P. PROFILE

JOB:
 P.O.#
 N/A
 DEALER
 N/A
 CONTRACTOR
 N/A
 ARCHITECT
 N/A
 PROJECT MANAGER
 N/A

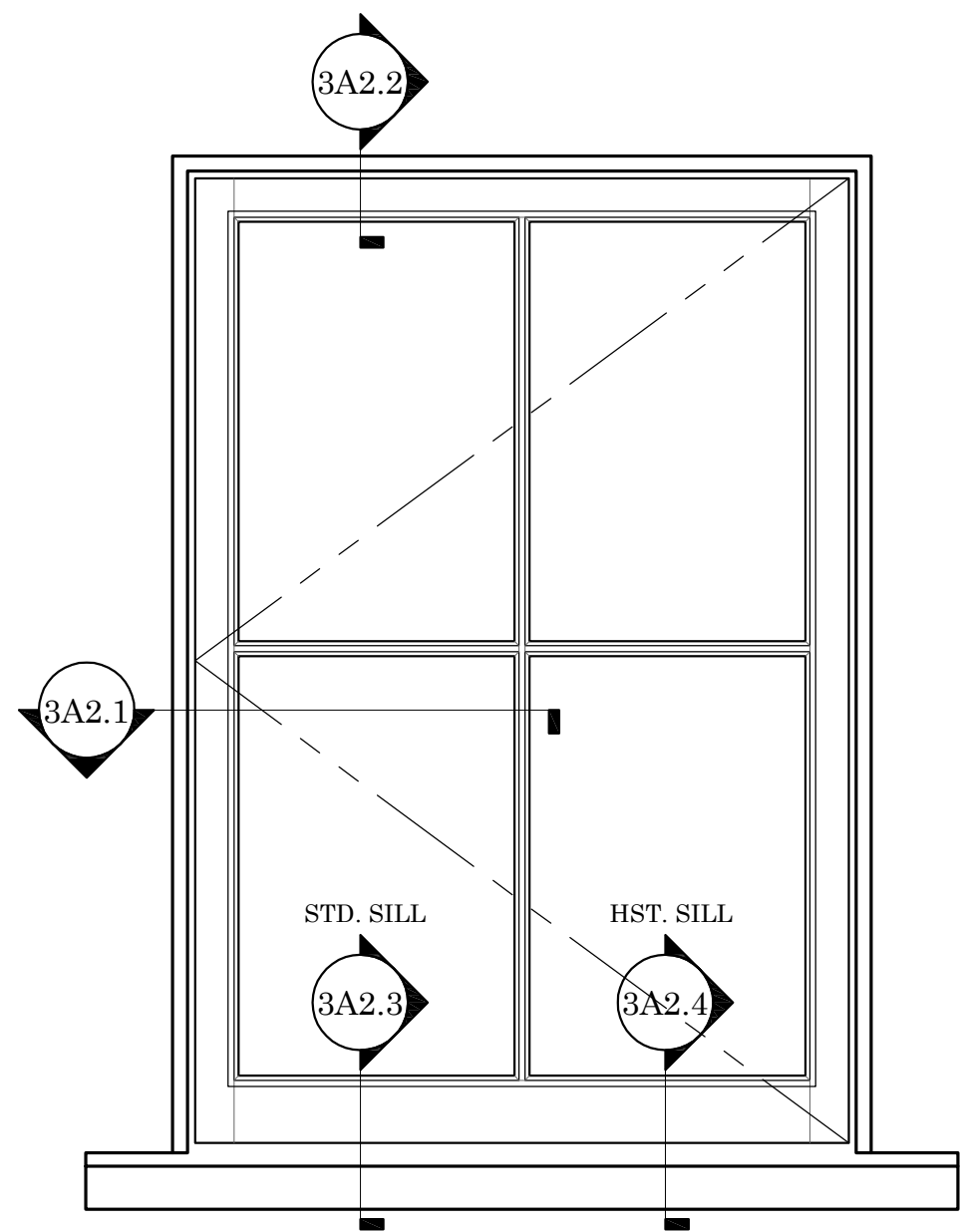
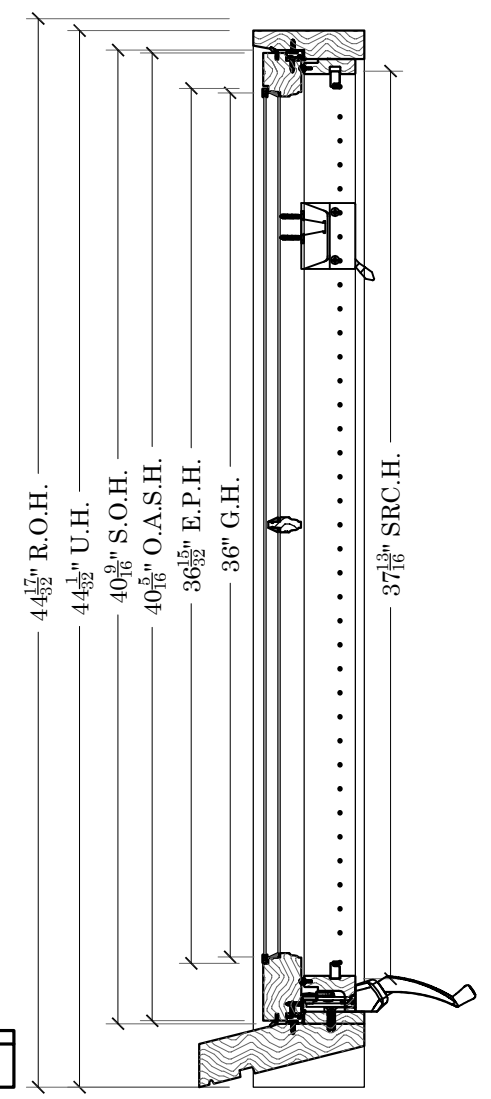
DRAWN BY:
KEITH KUTHAN
 DATE:
 11/11/2015
 SCALE:
 NOTED

DWG. NO:
SK3A2.0
 SHEET:
 1 OF 5

- ### STANDARD
- 4-5/8" UNIT DEPTH
 - S.S.B. GLASS (PUTTY GLAZED)
 - UTILE MAHOGANY FRAME & SASH
 - STANDARD 1-1/2" THICK WESTERN RED CEDAR SILLS
 - PRIMED EXTERIOR/ RAW INTERIOR
 - TRUTH HARDWARE (WHITE) SEE HARDWARE LIST
 - FULLY WEATHER SEALED
 - 5/8" T.D.L. MUNTIN GRILL CONFIGURATIONS
 - EXTERIOR ENERGY PANEL FOR ADDED EFFICIENCY
 - WHITE ROLLED FORM ALUMINUM SCREEN FRAMES
 - CHARCOAL FIBERGLASS SCREEN

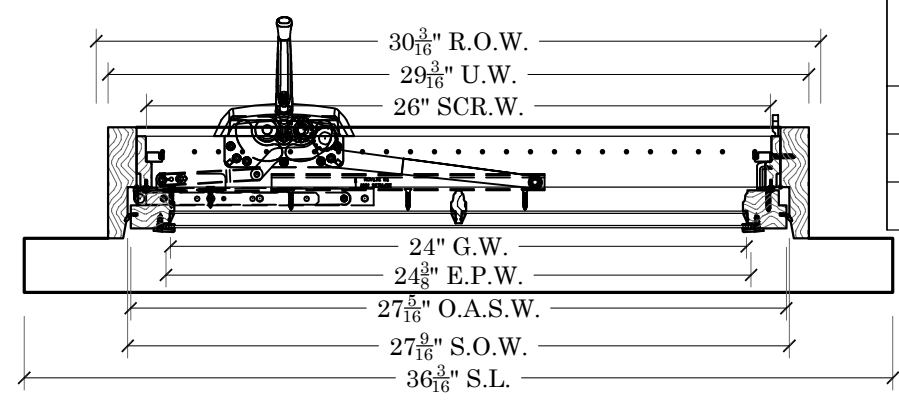
- ### SIZING
- U.W. = G.W.+5-3/16"
 - S.O.W.=G.W.+3-9/16"
 - O.A.S.W.= G.W.+3-5/16"
 - D.L.O.W.=G.W.-5/16"
 - U.H. = G.H.+8"
 - S.O.H.= G.H.+4-9/16"
 - O.A.S.H.=G.H.+4-5/16"
 - D.L.O.H.=G.H.-5/16"

- ### STD. HARDWARE
- 1 TRUTH ENTRY G.D.A.O. #15.63 L.H.
 - 1 TRUTH 3 HOLE TRACK # 30706
 - 1 TRUTH STUD BRACKET 10339-LH
 - 1 TRUTH STANDARD HANDEL #10024
 - 1 TRUTH OPERATOR COVER #10341
 - FINISH 32 OR 78 WHITE
 - 1 TRUTH HINGES # 14.05 L.H.
 - 1 TRUTH N.H.L.P. SASH LOCK #16.18
 - 1 TRUTH SASH LOCK KEEPER #31344
 - 32&78 WHITE



NANTUCKET E.P. CASEMENT

SCALE: 1-1/2"=1'



- ### EGRESS INFO.
- MINIMUM UNIT SIZES TO PASS 20"X24" C.O. MA. EGRESS
 - S. HARDWARE 28-3/4"W. X 30-1/2"H. OR 32-3/4"W. X 26-1/2"H
 - E. HARDWARE 26-1/8"W. X 30-1/2"H. OR 30-1/8"W. X 26-1/2"H

- ### OPTIONAL ITEMS
- 2" PINE OR UTILE MAHOGANY INT.EXTENSION JAMBS
 - DOUBLE STRENGTH ANNEALED & OR TEMPERED GLASS
 - D.P. RATING GLAZING
 - HISTORIC 1-3/4" THICK WESTERN RED CEDAR SILLS
 - LIFT OUT WOOD SCREENS
 - 5/4"X4" OR 4/4"X5" NOMINAL WESTERN RED CEDAR CASING

PLOT DATE:
 11/11/2015

FILE LOCATION: