

SASH & MILLWORK
 667 SPRING STREET
 NORTH DIGHTON, MA 02764
 PHONE # (508) 880-8808
 FAX # (508) 880-8828
 WWW.BOSTONSASH.COM

| |
|---|
| STANDARD |
| - 4-5/8" UNIT DEPTH |
| - S.S.B. GLASS (PUTTY GLAZED) |
| - UTILE MAHOGANY FRAME & SASH |
| - STANDARD 1-1/2" THICK WESTERN RED CEDAR SILLS |
| - PRIMED EXTERIOR/ RAW INTERIOR |
| - FULLY WEATHER SEALED |
| - 3/4" T.D.L. MUNTIN GRILL CONFIGURATIONS |

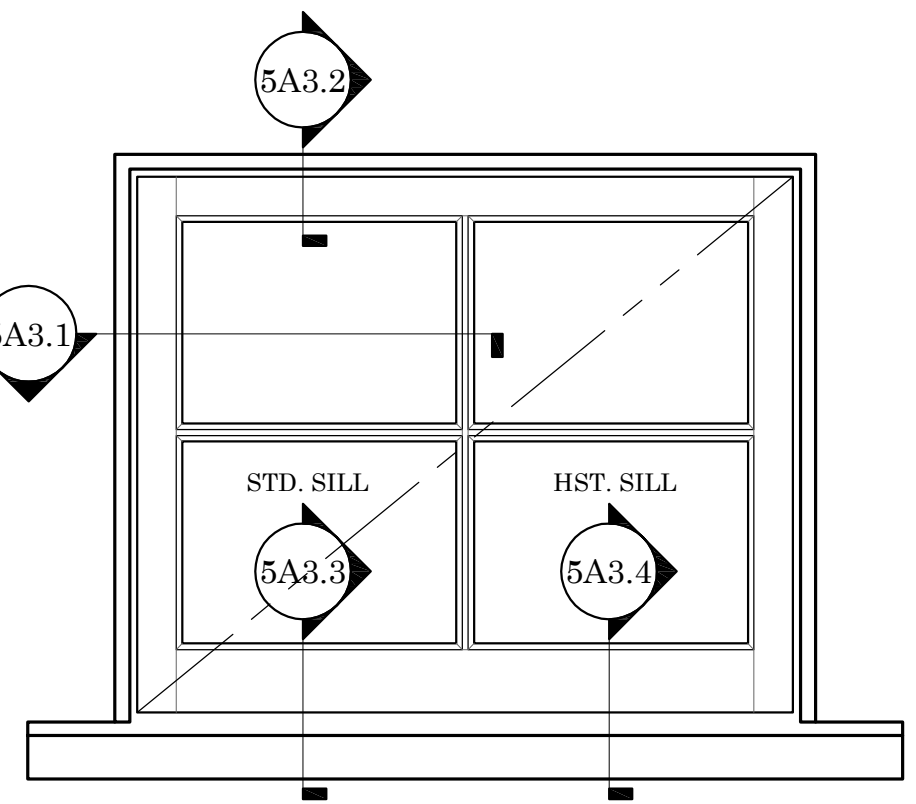
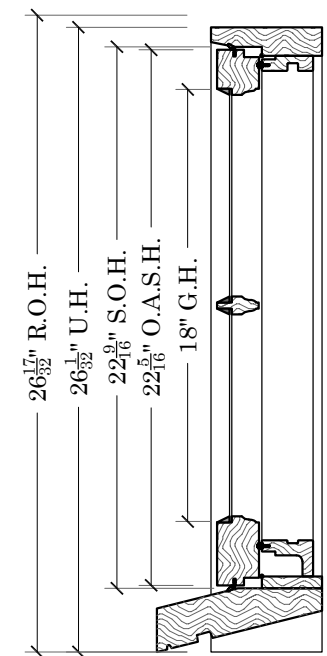
| |
|--------------------------|
| SIZING |
| - U.W. = G.W.+5-3/16" |
| - S.O.W.=G.W.+3-9/16" |
| - O.A.S.W.= G.W.+3-5/16" |
| - D.L.O.W.=G.W.-7/16" |
| - U.H. = G.H.+8" |
| - S.O.H.= G.H.+4-9/16" |
| - O.A.S.H.=G.H.+4-5/16" |
| -D.L.O.H.=G.H.-7/16" |

| |
|--|
| STD. HARDWARE |
| - HAFELE CONNECTING PLATES #260.22.930 |

| | |
|--------------|--|
| JOB: | B.S. STANDARDS |
| | AFFIXED AWN/CSMT OPTION 3 |
| DESCRIPTION: | ELEVATION, SECTIONS & NOTES NEWPORT PROFILE |

| | |
|-----------------|--------------|
| P.O.# | N/A |
| DEALER | N/A |
| CONTRACTOR | N/A |
| ARCHITECT | N/A |
| PROJECT MANAGER | N/A |
| DRAWN BY: | KEITH KUTHAN |
| DATE: | 11/11/2015 |
| SCALE: | NOTED |
| DWG. NO: | SK5A3.0 |
| SHEET: | 1 OF 5 |

| |
|---|
| OPTIONAL ITEMS |
| - 2" PINE OR UTILE MAHOGANY INT.EXTENSION JAMBS |
| - DOUBLE STRENGTH ANNEALED & OR TEMPERED GLASS |
| - D.P. RATING GLAZING |
| - HISTORIC 1-3/4" THICK WESTERN RED CEDAR SILLS |
| - 5/4"X4" OR 4/4"X5" NOMINAL WESTERN RED CEDAR CASING |



NEWPORT AFFIXED

SCALE: 1-1/2"=1'

