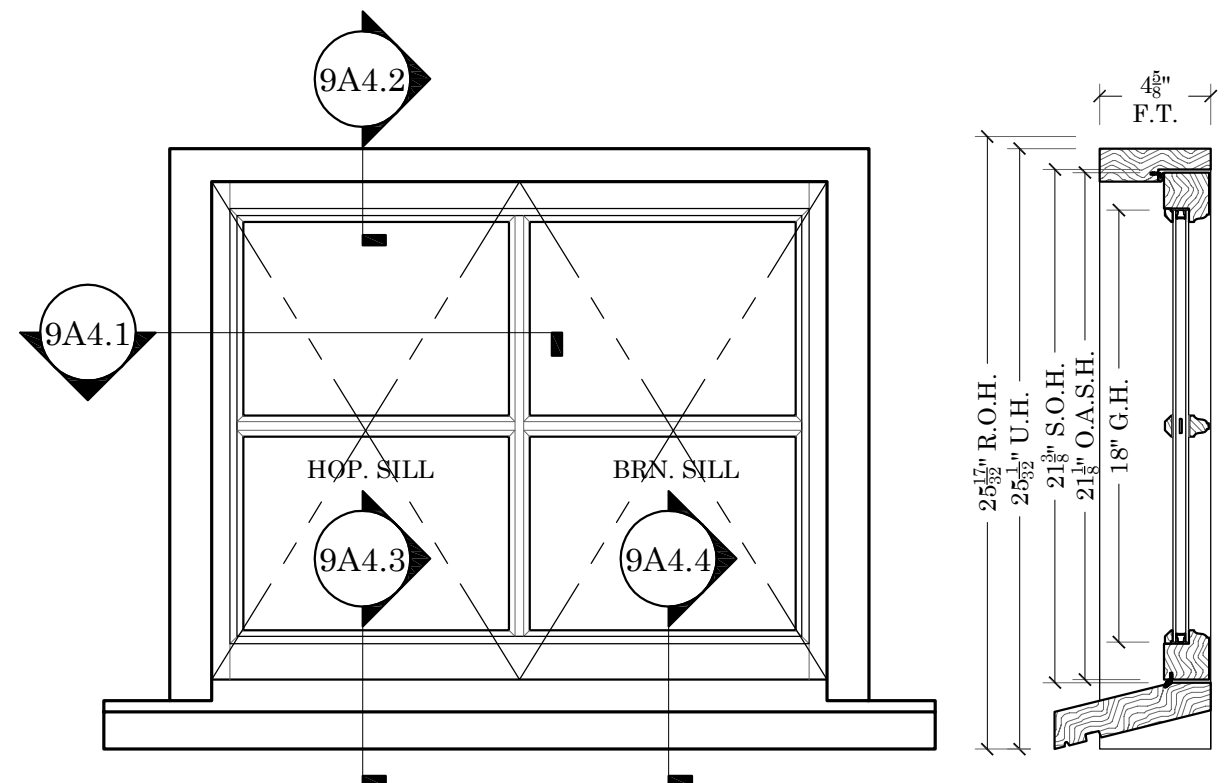


SASH & MILLWORK
 667 SPRING STREET
 NORTH DIGHTON, MA 02764
 PHONE # (508) 880-8808
 FAX # (508) 880-8828
 WWW.BOSTONSASH.COM

STANDARD
- 4-5/8" UNIT DEPTH
- ANNEALED DOUBLE STRENGTH GLASS, INSULATED GLASS UNIT
- UTILE MAHOGANY FRAME & SASH
- STANDARD 1-1/2" THICK WESTERN RED CEDAR SILLS
- PRIMED EXTERIOR/ RAW INTERIOR
- FULLY WEATHER SEALED
- 7/8" S.D.L. BAR & MUNTIN GRILL CONFIGURATIONS

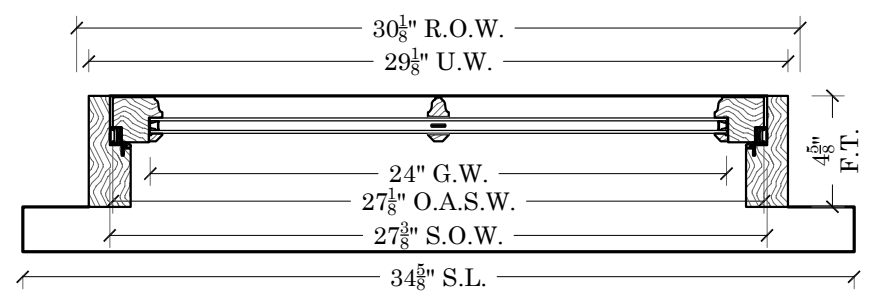


BACKBAY HOPPER/BARN

SCALE: 1-1/2"=1'

SIZING
- U.W. = G.W.+5.1/8"
- S.O.W.=G.W.+3-3/8"
- O.A.S.W.= G.W.+3-1/8"
- D.L.O.W.=G.W.-1"
- U.H. = G.H.+7-1/32"
- S.O.H.= G.H.+3-3/8"
- O.A.S.H.=G.H.+3-1/8"
-D.L.O.H.=G.H.-1"

STD. HARDWARE
- TRUTH-ANDERBERG 201SS 55° 4 BAR HINGES
- 8" PRT#34.11.00.101 VENT H. 9"-16" 19LBS MAX.
- 10" PRT#34.11.00.102 VENT H. 16"-20" 13LBS MAX.
- 12" PRT#34.12.00.100 VENT H. 20"-24" 28LBS MAX.
- 14" PRT#34.13.00.102 VENT H. 23"-28" 33LBS MAX.
- 16" PRT#34.14.00.100 VENT H. 28"-34" 40LBS MAX.
- 18" PRT#34.15.00.102 VENT H. 28"-34" 40LBS MAX.
- 20" PRT#34.16.00.100 VENT H. 32"-34" 40LBS MAX.



OPTIONAL ITEMS
- TEMPERED DOUBLE STRENGTH GLASS UNITS
- ARGON INSULATION GAP
- EXTERIOR LOW E 180
- 2" PINE OR UTILE MAHOGANY INT.EXTENSION JAMBS
- DOUBLE STRENGTH ANNEALED & OR TEMPERED GLASS
- D.P. RATING GLAZING
- 5/4"X4" OR 4/4"X5" NOMINAL WESTERN RED CEDAR CASING

JOB:	B.S. STANDARDS
	HOPPER / BARN OPTION 4
DESCRIPTION:	ELEVATION, SECTIONS & NOTES BACKBAY PROFILE

P.O.#	N/A
DEALER	N/A
CONTRACTOR	N/A
ARCHITECT	N/A
PROJECT MANAGER	N/A
DRAWN BY:	KEITH KUTHAN
DATE:	1/13/2016
SCALE:	NOTED
DWG. NO:	
SK9A4.0	
SHEET:	1 OF 5

PLOT DATE:
1/13/2016

FILE LOCATION: